

FIRST ROUND

Male

vs.

Elkhorn City

March 18, 1993

VISITORS (Last Name, First)

NO.	ELKHORN CITY	Tot		3-POINT		FT	FTA	Rebounds			PF	TP	A	TO	BLK	S	TIME	
		FG	FGA	FG	FGA			OFF	DEF	TOT								
05	CRUH, BRANDON	4	13	0	0	0	0	0	1	1	1	8	1	4	0	1	29:36	
42	HALL, JUSTIN	1	6	0	1	0	0	2	3	5	2	2	0	2	0	3	28:47	
04	SALVER, BRETT	1	4	0	0	0	0	1	1	2	2	2	1	2	0	5	24:40	
22	BATLIFF, JEFF	3	4	1	2	1	2	1	0	1	1	8	1	0	0	0	30:58	
34	CONLEY, TODD	9	33	3	14	5	6	3	5	8	4	26	2	6	0	6	26:58	
23	TAYLOR, ETHAN	1	2	0	0	0	0	1	1	2	2	2	0	0	0	1	10:50	
20	CRUH, JOSH	0	1	0	0	0	0	0	0	0	1	0	0	0	0	0	1:32	
44	SLONE, ROBERT	0	1	0	0	0	0	0	0	0	0	0	0	1	0	1	3:29	
40	FRALEY, DAN	0	0	0	0	0	0	0	0	0	1	0	0	0	0	0	0:47	
10	SMITH, WARNEY	0	0	0	0	0	0	0	0	0	0	0	0	0	0	0	0:39	
24	SLONE, KEVIN	0	0	0	0	0	0	1	0	1	1	0	0	0	0	0	0:49	
32	RATLIFF, NATHAN	0	2	0	0	0	0	2	0	2	1	0	0	0	0	0	0:15	
14	AHN, CHAD	0	0	0	0	0	0	0	0	0	0	0	0	0	0	0	0:15	
50	SIFERS, ZETH	0	0	0	0	0	0	0	0	0	0	0	0	0	0	0	0:15	
52	CANTRELL, BRIAN	0	0	0	0	0	0	1	0	1	1	0	0	0	0	0	0:10	
TEAM REBOUNDS (INCLUDED IN TOTALS)								3										
TOTALS		19	66	4	17	6	10	13	13	26	15	48	5	15	0	17	160	

TOTAL FG	1st HALF	3/21	14.3%	2nd HALF	16/45	35.6%	GAME	19/66	28.8%	DEADBALL	
3-POINT FG	1st HALF	2/3	66.7%	2nd HALF	2/14	14.3%	GAME	4/17	23.5%	REBOUNDS	2
FREE THROWS	1st HALF	0/0	0.0%	2nd HALF	6/10	60.0%	GAME	6/10	60.0%		

HOME (Last Name, First)

NO.	MALE	Tot		3-POINT		FT	FTA	Rebounds			PF	TP	A	TO	BLK	S	TIME	
		FG	FGA	FG	FGA			OFF	DEF	TOT								
25	OSBORNE, JASON	10	14	0	1	0	0	5	14	19	3	20	8	9	7	5	27:12	
50	MARTIN, DAVID	3	10	0	0	1	2	2	5	7	0	17	1	1	2	1	23:27	
11	WORDLOW, ANTUAN	2	6	0	0	1	2	4	3	7	4	5	0	2	1	0	17:50	
22	EDELEN, DANNY	3	7	2	5	0	0	2	4	6	1	3	5	7	0	1	24:01	
32	SHEE, DAVID	8	15	4	8	1	2	1	4	5	0	21	4	3	0	1	27:55	
20	BIBB, DON	3	5	1	1	0	0	2	0	2	1	7	3	0	0	1	14:14	
55	MOORE, DAMON	0	3	0	1	1	2	2	1	3	1	1	1	0	0	0	8:34	
10	ROWE, SHAWN	0	0	0	0	0	0	0	0	0	0	0	0	3	0	0	4:28	
52	GIVENS, NATE	0	0	0	0	0	0	0	0	0	0	0	0	0	0	0	2:18	
14	GRAHAM, TONY	0	3	0	0	0	1	0	0	0	0	0	0	0	0	0	2:27	
45	BUNTON, B. J.	0	1	0	0	0	0	2	0	2	1	0	0	0	1	0	2:11	
44	JOHNSON, LAMAR	0	1	0	0	1	2	1	2	3	0	1	0	0	0	0	2:11	
33	KELTEE, FRED	0	0	0	0	0	0	0	0	0	0	0	0	0	0	0	0:46	
30	MONTAGUE, MATT	0	1	0	0	0	1	2	0	2	0	0	0	0	0	0	1:13	
41	REDMAN, CHRIS	0	0	0	0	0	0	0	1	1	2	0	0	0	0	0	1:13	
TEAM REBOUNDS (INCLUDED IN TOTALS)								3										
TOTALS		34	66	7	16	5	12	24	36	60	14	80	22	25	11	9	160	

TOTAL FG	1st HALF	7/15	46.7%	2nd HALF	27/51	52.9%	GAME	34/66	51.5%	DEADBALL	
3-POINT FG	1st HALF	1/3	33.3%	2nd HALF	6/13	46.2%	GAME	7/16	43.8%	REBOUNDS	2
FREE THROWS	1st HALF	0/0	0.0%	2nd HALF	5/12	41.7%	GAME	5/12	41.7%		

OFFICIALS: GLENN BROWN, LYMAN BROWN, ALT-E. LIGGETT
 Technicals: None

SCORE BY PERIODS						
ELKHORN CITY	8	8	19	13	=	48
MALE	15	11	30	24	=	80

Attendance:	11,225
COMMENTS:	POINTS OFF TURNOVERS
ELKHORN CITY	19 MALE
14 ELKHORN CITY	10 MALE
SECOND CHANCE POINTS	14

ELKHORN CITY "COUGARS" vs MALE "BULLDOGS"
1st Half Play by Play

PAGE : 1

Tip off at 7:30 p.m. on 03/18/93 at BOYS STATE TOURNEY GAME 7
Produced by the KHSAA Sweet Sixteen Stat Crew with FINAL III - a Product of LEXIC

Player	Team	MALE	Time	Score	ELKHORN CITY	Player	Team
OSBORNE, JASON ,MARTIN, DAVID,WORDLOW, ANTUAN,EDELEN, DANNY,SHEE, DAVID					CRUM, BRANDON,HALL, JUSTIN,SALYER, BRETT,BAILIFF, JEFF,CONLEY, TODD		
Ball to BULLDOGS							
1-1	100%	1-3	33.3%	Follow Tip by OSBORNE, JASON	1 7:43	*2-0	
2-2	100%	2-5	40.0%	10 ft Lane Turnaround by OSBORNE, JASON	1 5:56		
1-2	50.0%	3-6	50.0%	Layup Off Fast Break by SHEE, DAVID	1 5:52	*4-0	
1		2		Assist by EDELEN, DANNY	1 5:29	*6-0	
REB: 8 A: 2 BLK: 4 TO: 3 PF: 0					REB: 3 A: 0 BLK: 0 TO: 0 PF: 1		
S: 0 FT: 0-0 00.0% FG: 3-6 50.0%					S: 1 FT: 0-0 00.0% FG: 0-8 00.0%		
T I M E - O U T ELKHORN CITY No. 1							
1	1			Foul on OSBORNE, JASON	1 4:27		
1	2			Foul on WORDLOW, ANTUAN	1 4:17		
2-3	66.6%	4-9	44.4%	3 pt 22 ft Straight Away Jump shot by SHEE, DAVID	1 4:02		
1-1	100%	5-10	50.0%	6 ft Lane Jump shot by MARTIN, DAVID	1 3:36	6-3*	3 pt 22 ft Straight Away Jump shot by CONLEY, TODD 1-10 10.0% 1-14 07.1%
1		4		Assist by OSBORNE, JASON	1 3:22	*9-3	
1		3		Foul on EDELEN, DANNY	1 2:49	*11-3	
2-2	100%	6-11	54.5%	4 ft Lane Driving by MARTIN, DAVID	1 2:35		
3		5		Assist by EDELEN, DANNY	1 2:35		Sub In: TAYLOR, ETHAN Out: CONLEY, TODD
3-4	75.0%	7-12	58.3%	6 ft Lane SHOT Off Fast Break by OSBORNE, JASON	1 2:19	*13-3	
				Sub In: BIBB, DON Out: WORDLOW, ANTUAN	1 1:50	*15-3	
					1 1:17		
					1 1:17		Sub In: CONLEY, TODD Out: TAYLOR, ETHAN
					1 0:55	15-5*	Driving Layup by BAILIFF, JEFF 1-1 100% 2-19 10.5%
							Assist by CONLEY, TODD 1 1
				Sub In: MOORE, DAMON Out: OSBORNE, JASON	1 0:19		
					1 0:19	15-8*	3 pt 22 ft Right Side Jump shot by CONLEY, TODD 2-12 16.6% 3-21 14.2%

ELKHORN CITY "COUGARS" vs MALE "BULLDOGS"
1st Half Play by Play

Tip off at 7:30 p.m. on 03/18/93 at BOYS STATE TOURNEY GAME 7
Produced by the KHSAA Sweet Sixteen Stat Crew with FINAL III - a Product of LEXICON

Player	Team	MALE	Time	Score	ELKHORN CITY	Player	Team
MOORE, DAMON, OSBORNE, JASON	BIBB, DON, EDELEN, DANNY, SHEE, DAVID	Ball to BULLDOGS			CRUM, BRANDON, HALL, JUSTIN, SALYER, BRETT, BAILIFF, JEFF, CONLEY, TODD		
3-5	60.0%	8-16 50.0%	3 pt 22 ft Straight Away Jump shot by SHEE, DAVID	2 7:51	*18-8		
4-5	80.0%	9-18 50.0%	Assist by EDELEN, DANNY 17 ft Left Side Jump shot by OSBORNE, JASON	2 7:04	*20-8		
1-3	33.3%	10-19 52.6%	3 pt 23 ft Right Side Jump shot by EDELEN, DANNY	2 6:37	20-10*	Layup Off Fast Break by SALYER, BRETT	1-3 33.3% 4-25 16.0%
1	7		Assist by MOORE, DAMON	2 6:21	*23-10		
1-2	50.0%	1-2 50.0%	MOORE, DAMON, 2 Free Throws missed 1st made 2nd	2 5:46		Foul on HALL, JUSTIN	1 3
			Sub In: ROWE, SHAWN Out: EDELEN, DANNY	2 5:46	*24-10		
5-7	71.4%	11-24 45.8%	Follow Tip by OSBORNE, JASON	2 5:46			
				2 4:08	24-12*	10 ft Left Side Bank by CONLEY, TODD	3-18 16.6% 5-29 17.2%
				2 3:43	*26-12		
				2 3:28	26-14*	4 ft Lane Turnaround by CONLEY, TODD	4-19 21.0% 6-30 20.0%
						Assist by CRUM, BRANDON	1 2
				2 3:01			
				2 3:01		Sub In: TAYLOR, ETHAN Out: HALL, JUSTIN	
				2 3:01			
				2 3:01		Sub In: CRUM, JOSH Out: SALYER, BRETT	
				2 2:41		Foul on CONLEY, TODD	2 4
				2 2:41			
				2 2:28		Sub In: HALL, JUSTIN Out: CRUM, JOSH	
				2 2:27		Sub In: SALYER, BRETT Out: CRUM, BRANDON	
				2 2:27		Foul on SALYER, BRETT	2 5
				2 1:47			
				2 1:37			
				2 1:15		Foul on CONLEY, TODD	3 6
				2 0:52		Sub In: CRUM, BRANDON Out: CONLEY, TODD	
				2 0:06	26-16*	Follow Layup by HALL, JUSTIN	1-4 25.0% 7-36 19.4%
3-7	42.8%	11-27 40.7%	3 pt 21 ft Right Angle Jump shot by SHEE, DAVID, missed	2 0:00			
0-1	Tot-1	0-1 Tot-30	Rebound by BIBB, DON	2 0:00			

Official Boxscore * OFFICIAL FIRST HALF *

Date: 03-18-93 Site:BOYS STATE TOURNEY GAME 7

VISITORS (Last Name, First)

NO.	ELKHORN CITY	Tot FG		3-POINT		FT	FTA	Rebounds			PF	TP	A	TO	BLK	S	TIME
		FG	FGA	FG	FGA			OFF	DEF	TOT							
05	CRUM, BRANDON	0	5	0	0	0	0	0	1	1	0	0	1	1	0	1	14:25
42	HALL, JUSTIN	1	4	0	0	0	0	2	2	4	1	2	0	2	0	2	15:26
04	SALYER, BRETT	1	4	0	0	0	0	1	1	2	2	2	0	1	0	4	15:26
22	BATLIFF, JEFF	1	1	0	0	0	0	0	0	0	0	2	0	0	0	0	16:00
34	CONLEY, TODD	4	21	2	8	0	0	3	2	5	3	10	1	3	0	4	13:50
23	TAYLOR, ETHAN	0	0	0	0	0	0	0	0	0	0	0	0	0	0	1	4:19
20	CRUM, JOSH	0	1	0	0	0	0	0	0	0	0	0	0	0	0	0	0:34
TEAM REBOUNDS (INCLUDED IN TOTALS)								2	6	2							
TOTALS		7	36	2	8	0	0	8	6	14	6	16	2	7	0	12	80
TOTAL FG 1st HALF		3/21	14.3%	2nd HALF		4/15	26.7%	GAME		7/36	19.4%	DEADBALL					
3-POINT FG 1st HALF		2/3	66.7%	2nd HALF		0/5	0.0%	GAME		2/8	25.0%	REBOUNDS				0	
FREE THROWS 1st HALF		0/0	0.0%	2nd HALF		0/0	0.0%	GAME		0/0	0.0%						

HOME (Last Name, First)

NO.	MALE	Tot FG		3-POINT		FT	FTA	Rebounds			PF	TP	A	TO	BLK	S	TIME
		FG	FGA	FG	FGA			OFF	DEF	TOT							
25	OSBORNE, JASON	5	7	0	0	0	0	3	10	13	2	10	1	7	5	3	14:04
50	MARTIN, DAVID	2	3	0	0	0	0	0	3	3	0	4	0	1	1	0	11:01
11	WORDLOW, ANTUAN	0	3	0	0	0	0	2	3	5	1	0	0	2	1	0	9:44
22	EDELEN, DANNY	1	3	1	2	0	0	0	3	3	1	3	4	5	0	1	12:55
32	SHEE, DAVID	3	7	2	4	0	0	1	1	2	0	8	1	2	0	0	14:36
20	BIBB, DON	0	2	0	0	0	0	2	0	2	1	0	0	0	0	0	9:17
55	MOORE, DAMON	0	2	0	1	1	2	1	1	2	0	1	1	0	0	0	5:18
10	ROWE, SHAWN	0	0	0	0	0	0	0	0	0	0	0	0	0	0	0	3:05
TEAM REBOUNDS (INCLUDED IN TOTALS)								9	21	30	5	26	7	17	7	4	80
TOTAL FG 1st HALF		7/15	46.7%	2nd HALF		4/12	33.3%	GAME		11/27	40.7%	DEADBALL					
3-POINT FG 1st HALF		1/3	33.3%	2nd HALF		2/4	50.0%	GAME		3/7	42.9%	Rebounds				2	
FREE THROWS 1st HALF		0/0	0.0%	2nd HALF		1/2	50.0%	GAME		1/2	50.0%						

OFFICIALS: GLENN BROWN, LYMAN BROWN, ALT-E. LIGGETT
 Technicals: None

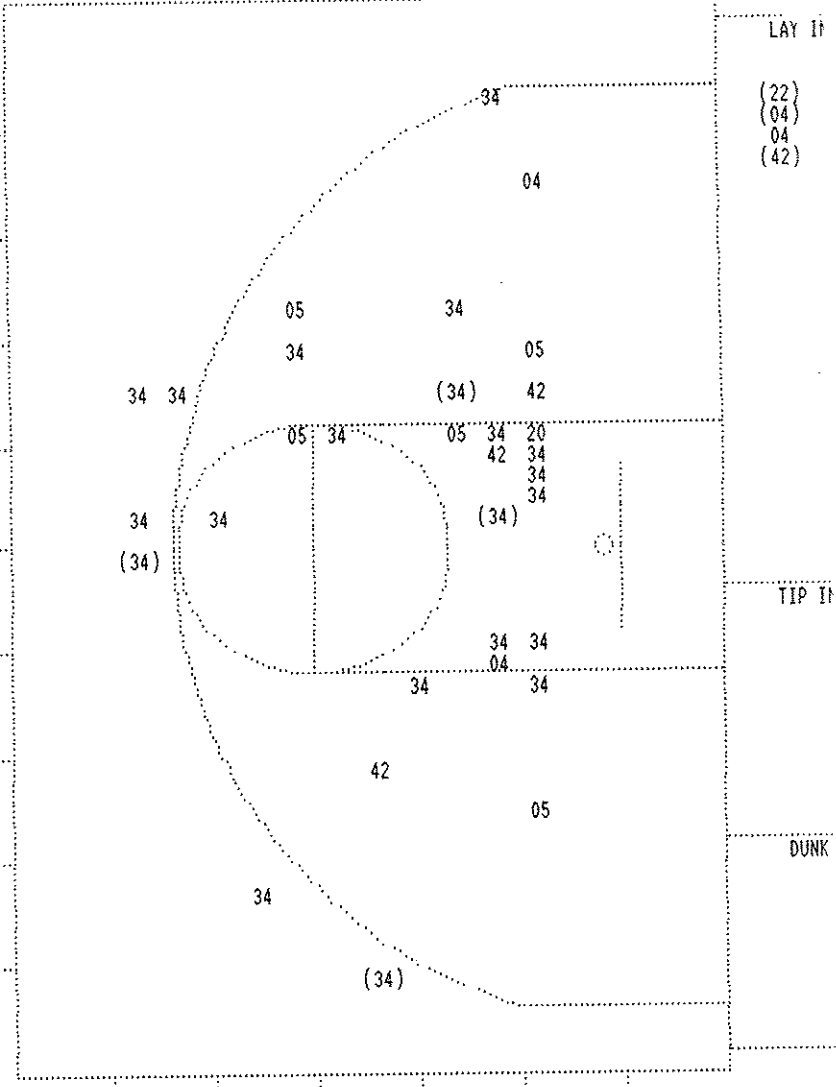
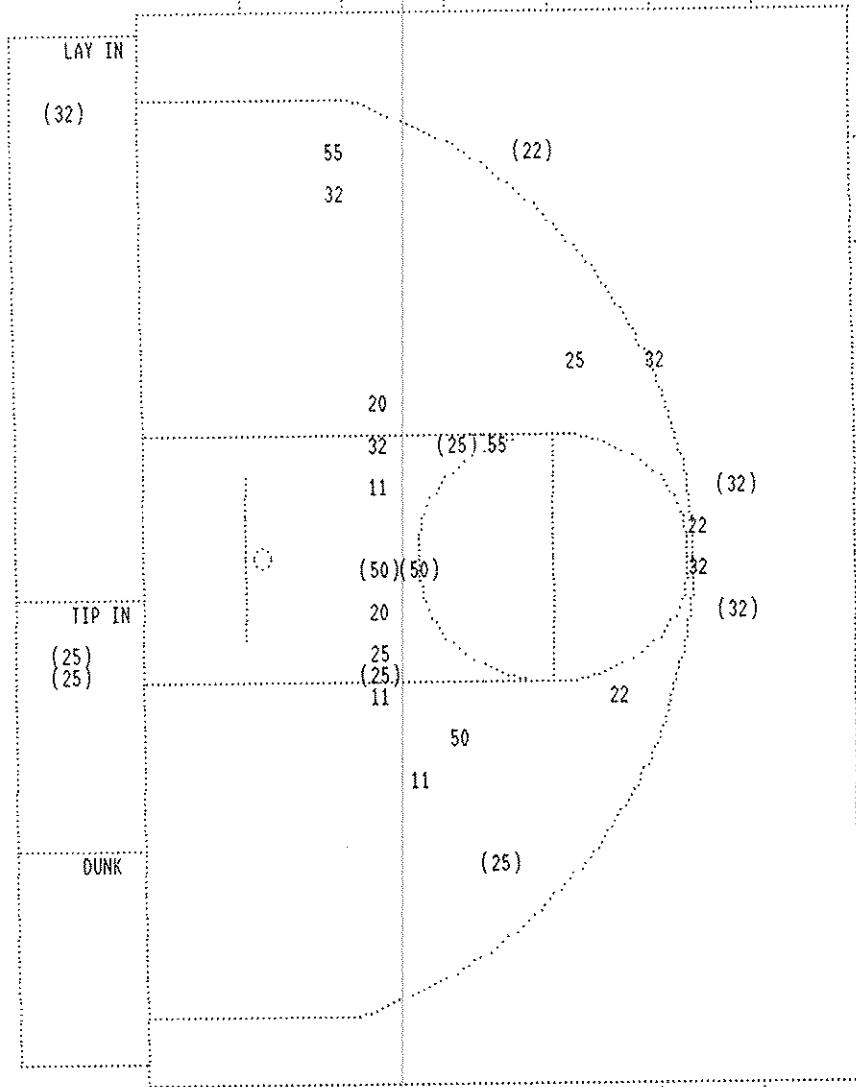
SCORE BY PERIODS			
ELKHORN CITY	8	8	= 16
MALE	15	11	= 26

Attendance:

COMMENTS:	POINTS OFF	TURNOVERS	ELKHORN CITY	SECOND CHANCE POINTS	MALE
ELKHORN CITY	11	MALE	3	5	5

Produced by the KHSAA Sweet Sixteen Stat Crew with FINAL III - a Product of LEXICON SPORTS™

FIRST HALF SHOT CHART Produced by the KHSAA Sweet Sixteen Stat Crew with FINAL III - a Product of LEXICON SPORTS™



MALE					
Player			Player		Player
25 - OSBORNE, J	5 / 7	71.4%	20 - BIBB, DON	0 / 2	0.0%
50 - MARTIN, DA	2 / 3	66.6%	55 - MOORE, DAM	0 / 2	0.0%
11 - WORDLOW, A	0 / 3	0.0%			
22 - EDELEN, DA	1 / 3	33.3%			
32 - SHEE, DAVI	3 / 7	42.8%			
Layups	1-9 Ft	10-15 Ft	Over 15 Ft	3 Pointers	Total
3 / 3	3 / 9	1 / 4	1 / 4	3 / 7	11 / 27
100.0%	33.3%	25.0%	25.0%	42.9%	40.7%

ELKHORN CITY					
Player			Player		Player
05 - CRUM, BRAN	0 / 5	0.0%	20 - CRUM, JOSH	0 / 1	0.0%
42 - HALL, JUST	1 / 4	25.0%			
04 - SALTER, BR	1 / 4	25.0%			
22 - BAILIFF, J	1 / 1	100.0%			
34 - CONLEY, TO	4 / 21	19.0%			
Layups	1-9 Ft	10-15 Ft	Over 15 Ft	3 Pointers	Total
3 / 4	1 / 13	1 / 8	0 / 3	2 / 8	7 / 36
75.0%	7.7%	12.5%	0.0%	25.0%	19.4%

ELKHORN CITY "COUGARS" vs MALE "BULLDOGS"
2nd Half Play by Play

PAGE : 1

Tip off at 7:30 p.m. on 03/18/93 at BOYS STATE TOURNEY GAME 7
Produced by the KHSAA Sweet Sixteen Stat Crew with FINAL III - a Product of LEXIC

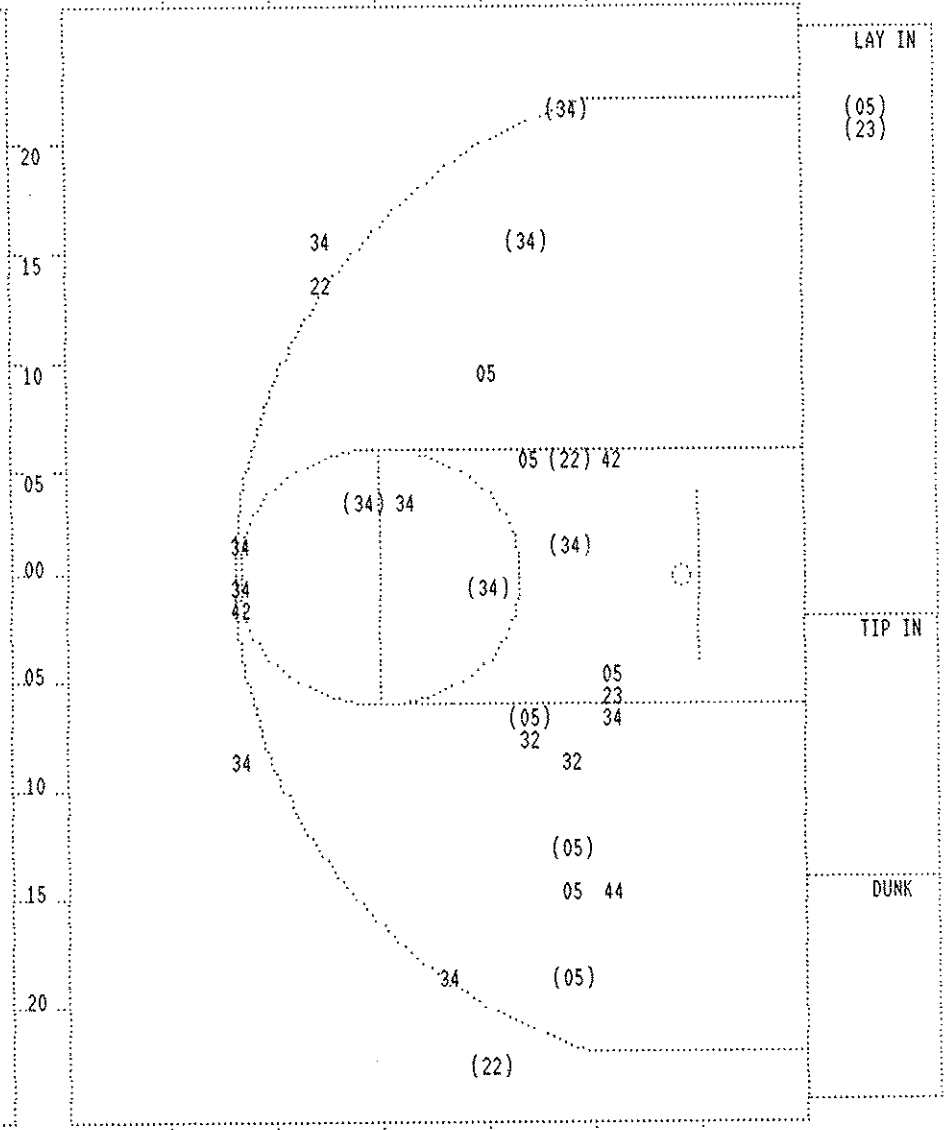
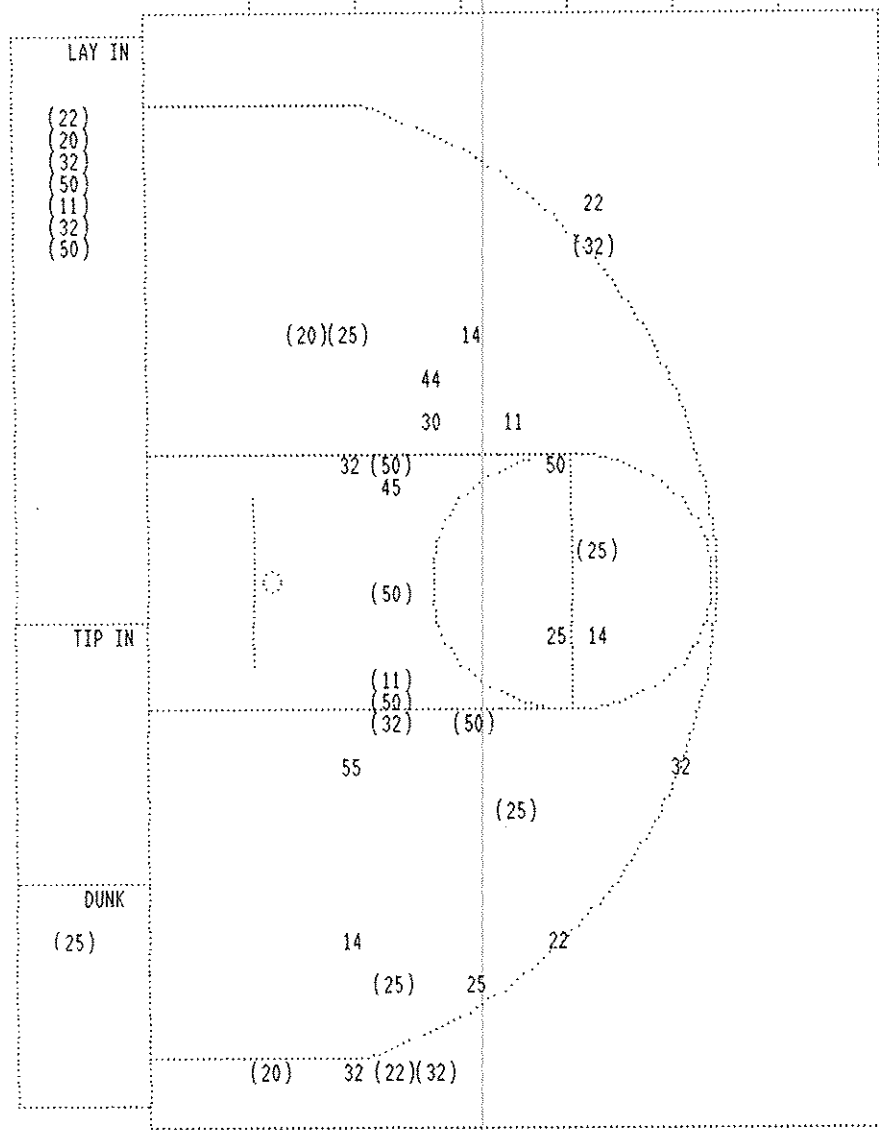
Player	Team	MALE	Time	Score	ELKHORN CITY	Player	Team	
OSBORNE, JASON ,MARTIN, DAVID,WORDLOW, ANTUAN,EDELEN, DANNY,SHEE, DAVID			CRUM, BRANDON,HALL, JUSTIN,SALYER, BRETT,BAILIFF, JEFF,CONLEY, TODD				Ball to COUGARS	
6-8	75.0%	12-28 42.8%	14 ft Left Angle Jump shot by OSBORNE, JASON	3 7:31	*28-16	15 ft Lane Jump shot by CONLEY, TODD	5-22 22.7% 8-38 21.0%	
4-8	50.0%	13-29 44.8%	3 pt 23 ft Left Side Jump shot by SHEE, DAVID	3 7:19	28-18*			
			Assist by MARTIN, DAVID	3 7:00	*31-18			
3-4	75.0%	14-30 46.6%	7 ft Lane Bank by MARTIN, DAVID	3 6:49	*33-18			
			Assist by EDELEN, DANNY	3 6:08	33-20*	18 ft Right Side Jump shot by CRUM, BRANDON	1-8 12.5% 9-41 21.9%	
7-9	77.7%	15-31 48.3%	14 ft Lane Jump shot by OSBORNE, JASON	3 5:51	*35-20	Assist by SALYER, BRETT	1 3	
				3 5:33		Sub In: TAYLOR, ETHAN Out: SALYER, BRETT		
1-4	25.0%	16-33 48.4%	6 ft Lane Jump shot by WORDLOW, ANTUAN	3 5:33	*37-20			
			Assist by OSBORNE, JASON	3 5:15	37-22*	Driving Layup by CRUM, BRANDON	2-9 22.2% 10-43 23.2%	
5-10	50.0%	17-34 50.0%	7 ft Left Side Bank by SHEE, DAVID	3 5:02	*39-22	Assist by CONLEY, TODD	2 4	
				3 5:02		Foul on TAYLOR, ETHAN	1 1	
0-1	00.0%	1-3 33.3%	SHEE, DAVID, 1 Free Throw missed	3 5:02				
4-5	80.0%	18-36 50.0%	6 ft Lane Follow by MARTIN, DAVID	3 5:02	39-24*	7 ft Left Side Follow by BAILIFF, JEFF	2-2 100% 11-45 24.4%	
				3 5:02	*41-24			
8-11	72.7%	19-37 51.3%	12 ft Right Side Turnaround by OSBORNE, JASON	3 5:00	41-27*	3 pt 22 ft Left Side Jump shot by CONLEY, TODD	6-26 23.0% 12-46 26.0%	
				3 4:10	*43-27			
2-4	50.0%	20-38 52.6%	3 pt 22 ft Left Side Jump shot by EDELEN, DANNY	3 4:00	43-29*	Follow Layup by TAYLOR, ETHAN	1-1 100% 13-48 27.0%	
			Assist by SHEE, DAVID	3 3:46	*46-29			
			Foul on OSBORNE, JASON	3 3:25				
1-2	50.0%	2-5 40.0%	WORDLOW, ANTUAN, 2 Free Throws made 1st missed 2nd	3 3:18	46-31*	CONLEY, TODD, 2 Free Throws made both	2-2 100% 2-2 100%	
			Foul on WORDLOW, ANTUAN	3 3:05		Foul on TAYLOR, ETHAN	2 2	
				3 3:05	*47-31			
				3 3:02				
				3 3:02		Sub In: SLONE, ROBERT Out: HALL, JUSTIN		
				3 3:02	47-33*	8 ft Lane Jump shot by CRUM, BRANDON	3-10 30.0% 14-49 28.5%	
				3 2:34		Foul on CONLEY, TODD	4 3	
				3 2:34				
				3 2:34		Sub In: HALL, JUSTIN Out: CONLEY, TODD		
1-2	50.0%	3-7 42.8%	MARTIN, DAVID, 2 Free Throws made 1st missed 2nd	3 2:34	*48-33			
9-13	69.2%	21-43 48.8%	18 ft Left Side Jump shot by OSBORNE, JASON	3 1:40	*50-33			
				3 1:20	50-35*	13 ft Right Side Jump shot by CRUM, BRANDON	4-12 33.3% 15-51 29.4%	
						Assist by BAILIFF, JEFF	1 5	
3-6	50.0%	22-44 50.0%	Driving Layup by EDELEN, DANNY	3 1:02	*52-35			
			Assist by OSBORNE, JASON	3 0:44	*54-35			
10-14	71.4%	23-45 51.1%	Dunk Off Fast Break by OSBORNE, JASON	3 0:43				
				3 0:43		REB: 19 A: 5 BLK: 0 TO: 10 PF: 3		
				3 0:41		S: 14 FT: 2-2 100% FG: 15-51 29.4%		
				3 0:41				
				3 0:41				
1-3	33.3%	24-46 52.1%	Layup Off Fast Break by BIBB, DON	3 0:19	*56-35			

REB: 41 A: 12 BLK: 9 TO: 20 PF: 2
S: 7 FT: 3-7 42.8% FG: 23-45 51.1%

T I M E - O U T ELKHORN CITY No. 1

Player	Team	MALE	Time	Score	ELKHORN CITY	Player	Team
ROME, SHAWN, OSBORNE, JASON		WORDLOW, ANTUAN, BIBB, DON, MOORE, DAMON				CRUM, BRANDON, HALL, JUSTIN, SALYER, BRETT, BAILIFF, JEFF, CONLEY, TODD	
		Ball to BULLDOGS					
1	3	Foul on MOORE, DAMON	4 7:47	56-37*	17 ft Left Side Jump shot by CONLEY, TODD	7-28	25.0% 16-53 30.1%
			4 7:47				
			4 7:47	56-38*	CONLEY, TODD, 1 Free Throw made	3-3	100% 3-3 100%
			4 7:32	56-41*	3 pt 23 ft Right Side Jump shot by BAILIFF, JEFF	3-3	100% 17-54 31.4%
			4 7:18				
		REB: 44 A: 12 BLK: 9 TO: 23 PF: 4	4 7:18		REB: 19 A: 5 BLK: 0 TO: 11 PF: 3		
		S: 8 FT: 3-7 42.8% FG: 24-48 50.0%	No. 1	MALE T I M E - O U T	S: 16 FT: 3-3 100% FG: 17-54 31.4%		
		Sub In: SHEE, DAVID Out: ROME, SHAWN	4 7:18				
		Sub In: EDELEN, DANNY Out: MOORE, DAMON	4 7:18				
		Sub In: MARTIN, DAVID Out: BIBB, DON	4 7:18				
5-12	50.0%	25-49 51.0%	4 7:08	*58-41	Layup Off Fast Break by SHEE, DAVID		
					Assist by OSBORNE, JASON		
5-7	71.4%	26-50 52.0%	4 6:44	*60-41	Driving Layup by MARTIN, DAVID		
					Assist by OSBORNE, JASON		
2-6	33.3%	27-51 52.9%	4 6:29	60-43*	4 ft Lane Driving by CONLEY, TODD	8-30	26.6% 18-56 32.1%
			4 6:14	*62-43			
		Assist by OSBORNE, JASON					
		Foul on WORDLOW, ANTUAN	4 6:01				
		Sub In: BIBB, DON Out: WORDLOW, ANTUAN	4 6:01	62-44*	CONLEY, TODD, 2 Free Throws missed 1st made 2nd	4-5	80.0% 4-5 80.0%
			4 6:01				
			4 6:01	62-45*	CONLEY, TODD, 1 Free Throw made	5-6	83.3% 5-6 83.3%
			4 5:49	*64-45			
6-8	75.0%	28-52 53.8%	4 5:31	*66-45	10 ft Left Angle Jump shot by MARTIN, DAVID		
					Assist by SHEE, DAVID		
7-13	53.8%	29-53 54.7%	4 5:31		Layup Off Fast Break by SHEE, DAVID		
					Assist by BIBB, DON		
1-2	50.0%	4-8 50.0%	4 5:31	*67-45	SHEE, DAVID, 1 Free Throw made	1	4
			4 5:19	67-47*	8 ft Lane Driving by CONLEY, TODD	9-32	28.1% 19-58 32.7%
			4 4:49	*69-47			
7-9	77.7%	30-54 55.5%	4 4:12	*72-47	Driving Layup by MARTIN, DAVID		
					Assist by BIBB, DON		
8-15	53.3%	31-57 54.3%	4 3:49	*74-47	3 pt 21 ft Right Side Jump shot by SHEE, DAVID		
					Assist by OSBORNE, JASON		
2-4	50.0%	32-58 55.1%	4 3:31	*77-47	12 ft Right Base Line Jump shot by BIBB, DON		
					Assist by OSBORNE, JASON		
			4 3:31		Sub In: GIVENS, NATE Out: EDELEN, DANNY		
3-5	60.0%	33-59 55.9%	4 3:31		3 pt 22 ft Left Base Line Jump shot by BIBB, DON		
					Assist by SHEE, DAVID		
		REB: 50 A: 21 BLK: 9 TO: 24 PF: 5	4 3:10		REB: 19 A: 5 BLK: 0 TO: 14 PF: 4		
		S: 8 FT: 4-8 50.0% FG: 33-59 55.9%	T I M E - O U T	ELKHORN CITY No. 2	S: 17 FT: 5-6 83.3% FG: 19-60 31.6%		
8-10	80.0%	34-60 56.6%	4 2:43	*79-47	4 ft Lane Driving by MARTIN, DAVID		
					Assist by BIBB, DON		
		Sub In: GRAHAM, TONY Out: BIBB, DON	4 2:27				
		Sub In: BUNTON, B. J. Out: OSBORNE, JASON	4 2:11		Foul on HALL, JUSTIN	2	5
		Sub In: JOHNSON, LAMAR Out: MARTIN, DAVID	4 2:11				
			4 2:11		Sub In: TAYLOR, ETHAN Out: HALL, JUSTIN		
1	6	Foul on GIVENS, NATE	4 1:59				
		Sub In: KELTEE, FRED Out: SHEE, DAVID	4 1:59				
			4 1:30		Foul on BAILIFF, JEFF	1	6
		Sub In: MONTAGUE, MATT Out: GIVENS, NATE	4 1:13				
		Sub In: REDMAN, CHRIS Out: KELTEE, FRED	4 1:13				
			4 1:13		Sub In: CRUM, JOSH Out: SALYER, BRETT		
			4 1:13		Sub In: SLONE, ROBERT Out: TAYLOR, ETHAN		
1	7	Foul on REDMAN, CHRIS	4 1:02	79-48*	BAILIFF, JEFF, 2 Free Throws missed 1st made 2nd	1-2	50.0% 6-8 75.0%
			4 1:02		Sub In: FRALEY, DAN Out: BAILIFF, JEFF		
			4 0:49		Foul on FRALEY, DAN	1	7
			4 0:49		Sub In: SMITH, WARNEY Out: SLONE, ROBERT		
1-2	50.0%	5-10 50.0%	4 0:49	*80-48	JOHNSON, LAMAR, 2 Free Throws made 1st missed 2nd		
			4 0:49		Sub In: SLONE, KEVIN Out: CRUM, BRANDON		
			4 0:18		Foul on CRUM, JOSH	1	8
			4 0:18		Sub In: SLONE, ROBERT Out: CONLEY, TODD		
0-1	00.0%	5-11 45.4%	4 0:18		MONTAGUE, MATT, 1 & Bonus missed 1st		
			4 0:15		Foul on BUNTON, B. J.		
			4 0:15		Subs In: RATLIFF, NATHAN, AHN, CHAD, SIFERS, ZETH		
					Out: CRUM, JOSH, FRALEY, DAN, SLONE, ROBERT		
			4 0:10		Sub In: CANTRELL, BRIAN Out: SMITH, WARNEY		
			4 0:09		SLONE, KEVIN, 1 & Bonus missed 1st	0-1	00.0% 6-9 66.6%
			4 0:09		Foul on RATLIFF, NATHAN	1	9
0-1	00.0%	5-12 41.6%	4 0:09		GRAHAM, TONY, 1 & Bonus missed 1st		
			4 0:06		Foul on REDMAN, CHRIS		
			4 0:06		CANTRELL, BRIAN, 1 & Bonus missed 1st	0-1	00.0% 6-10 60.0%
			4 0:00		8 ft Lane Follow by RATLIFF, NATHAN, missed	0-2	00.0% 19-66 28.7%
0-1	Tot-1	0-1 Tot-60	4 0:00		Rebound by REDMAN, CHRIS		

SECOND HALF SHOT CHART Produced by the KHSAA Sweet Sixteen Stat Crew with FINAL III - a Product of LEXICON SPORTS™



MALE					
Player			Player		
25 - OSBORNE, J	5 / 7	71.4%	14 - GRAHAM, TO	0 / 3	0.0%
50 - MARTIN, DA	6 / 7	85.7%	20 - BIBB, DON	3 / 3	100.0%
11 - WORDLOW, A	2 / 3	66.6%	30 - MONTAGUE, J	0 / 1	0.0%
22 - EDELEN, DA	2 / 4	50.0%	44 - JOHNSON, L	0 / 1	0.0%
32 - SHEE, DAVI	5 / 8	62.5%	45 - BUNTON, B.	0 / 1	0.0%
Layups	1-9 Ft	10-15 Ft	Over 15 Ft	3 Pointers	Total
8 / 8	5 / 8	5 / 12	1 / 2	4 / 9	23 / 39
100.0%	62.5%	41.7%	50.0%	44.4%	59.0%

ELKHORN CITY					
Player			Player		
05 - CRUM, BRAN	4 / 8	50.0%	32 - RATLIFF, N	0 / 2	0.0%
42 - HALL, JUST	0 / 2	0.0%	44 - SLONE, ROB	0 / 1	0.0%
22 - BAILIFF, J	2 / 3	66.6%			
34 - CONLEY, TO	5 / 12	41.6%			
23 - TAYLOR, ET	1 / 2	50.0%			
Layups	1-9 Ft	10-15 Ft	Over 15 Ft	3 Pointers	Total
2 / 2	4 / 11	2 / 6	2 / 2	2 / 9	12 / 30
100.0%	36.4%	33.3%	100.0%	22.2%	40.0%